

How to Change Shorthand File Permissions

OfficeSoft LLC Web site: <http://pcshorthand.com>

If you get the error message: "Unable to write to c:\sh10\Shorthnd.ini.", this means that Shorthand doesn't have permission to modify the files in the Shorthand folder.

The simplest solution is to reinstall Shorthand under a folder where you have full read/write permission; for example, reinstall Shorthand to **Desktop\sh10** or **Documents\sh10** instead of c:\sh10.

An alternative solution is change the file permissions of the C:\sh10 folder. The instructions below assume you had installed Shorthand to c:\sh10.

Step 1

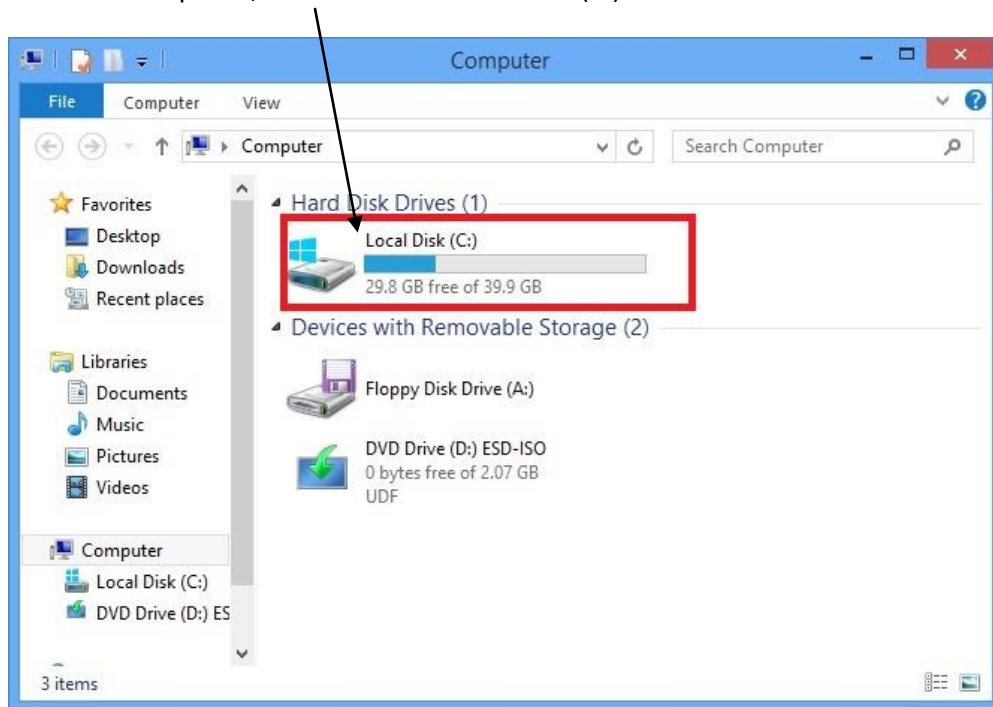
Bring up Windows Explorer by pressing **Win+E** (while holding down the Windows Logo Key , press E).

The Windows Logo key logo is located at the bottom right of your keyboard:



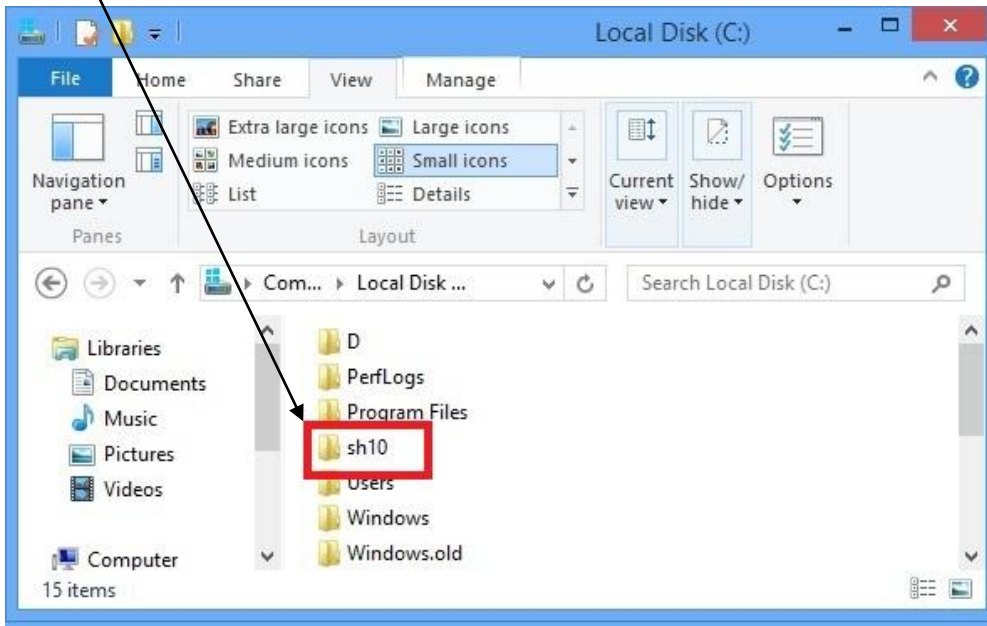
Step 2

In Windows Explorer, **double-click** on Local Disk (C:)



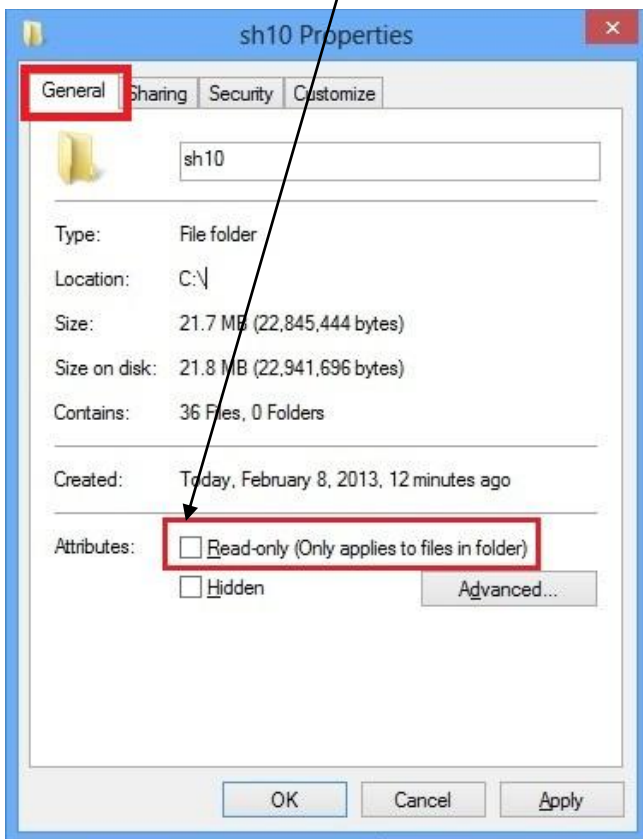
Step 3

Right-Click on the sh10 folder and select **Properties**. This brings up the sh10 Properties window.



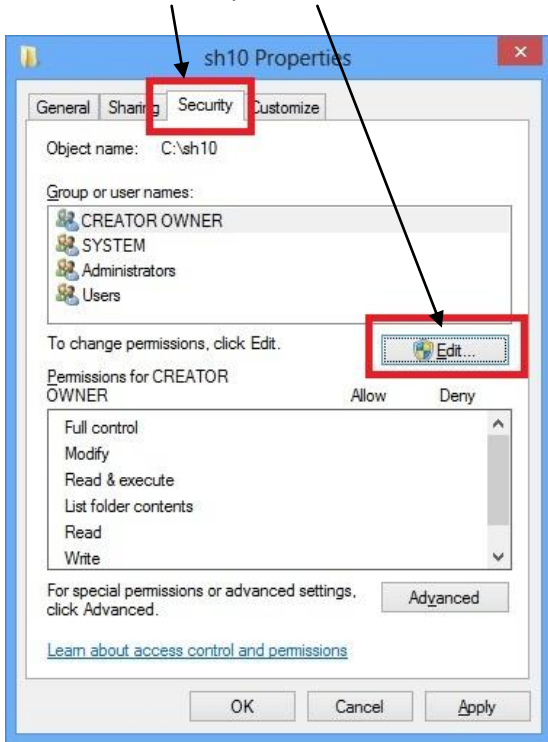
Step 4

Under the General Tab, **uncheck** the Read-only box.



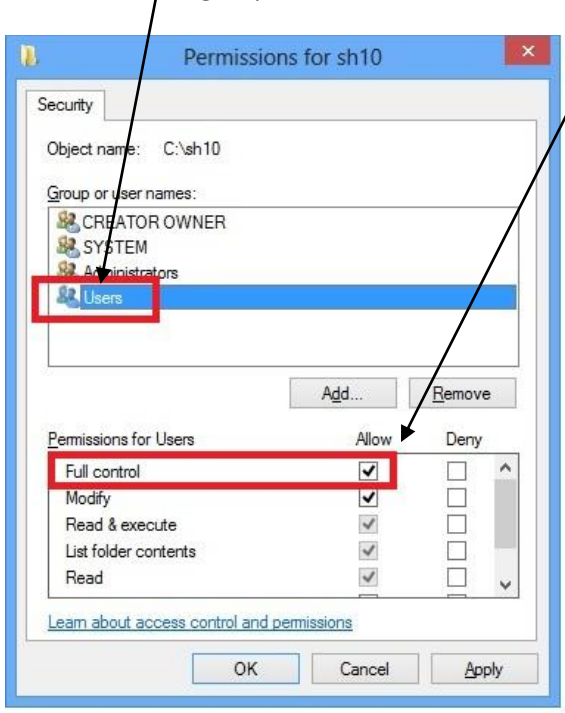
Step 5

Click on the Security tab then click on the Edit button.



Step 6

Select the Users group then check the Full Control Allow box.



Step 7

Click the **OK** button to apply the changes (you may need to click OK more than once).